

وبلاگ نظارت و ایمنی کارگاه

LIFT/ELEVATOR SHAFT MODULE



وبلاگ نظارت و ایمنی کارگاه

OBJECTIVE OF THIS MODULE

Outline areas that need to be considered in order that maximum control is applied where there is a risk of

Worker/s falling

Materials falling

وبلاگ نظارت و ایمنی کارگاه

All lift/elevator shafts will be constructed in such a way as to protect both those carrying out the construction and those below carrying out the lift installation. All intermediate floors will be fully protected against the egress of materials or personnel.

THIS PROTECTION SHOULD BE
TAMPER PROOF AND SUITABLY RESTRAINED



A construction site, if lacking in planning, can be filled with dangerous situations and locations.

With fore thought and planning, one of the most dangerous areas (lift/elevator shafts) can be managed to ensure that fall risks are totally eliminated.



Both illustrations break all the rules

There is absolutely nil protection to stop
either personnel or materials entering and falling down the shaft.

0/10

Warning notice stating
Danger Lift Shaft and
Keep Access Clear.

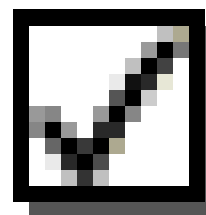
Sliding door lock.



Steel frame and Sliding
door bolted to reinforced
concrete lift shaft core.



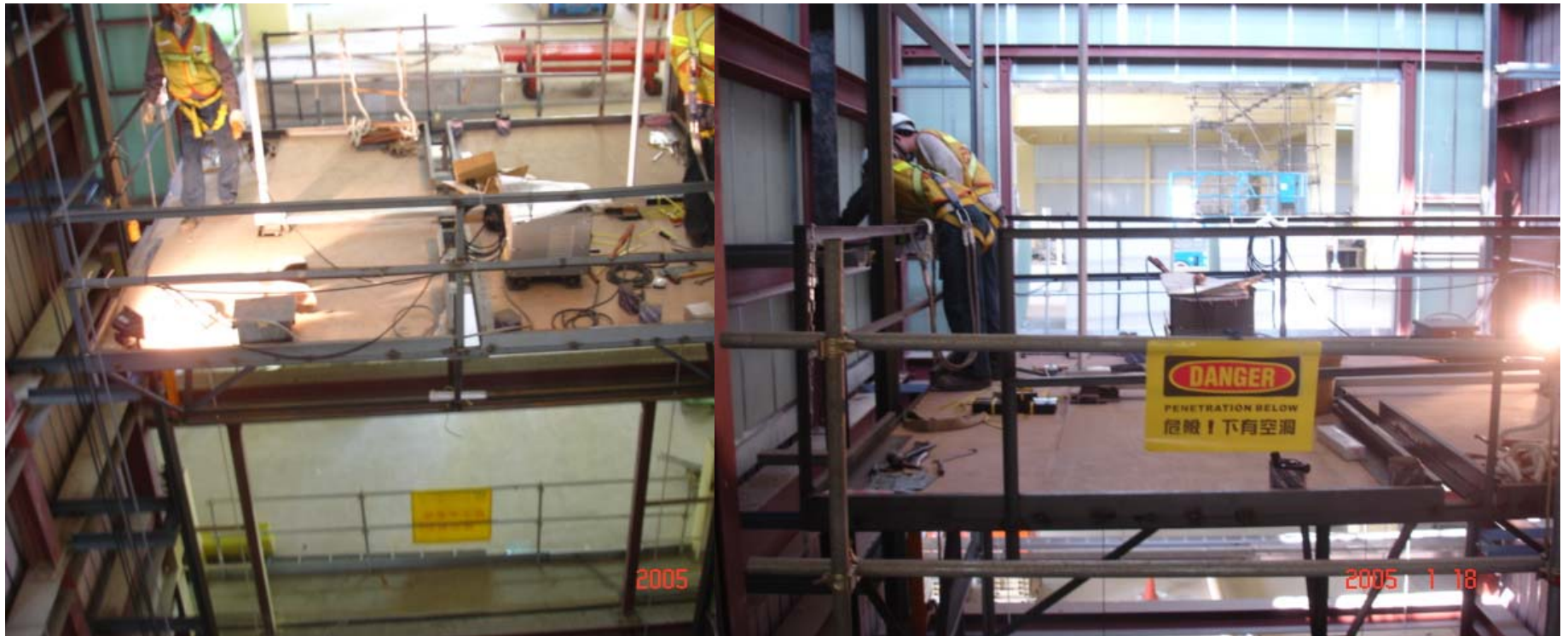
10/10



CORRECT

Lift shaft sliding door in the open
position showing the double guardrail
behind, which is securely fixed to the
doorframe.

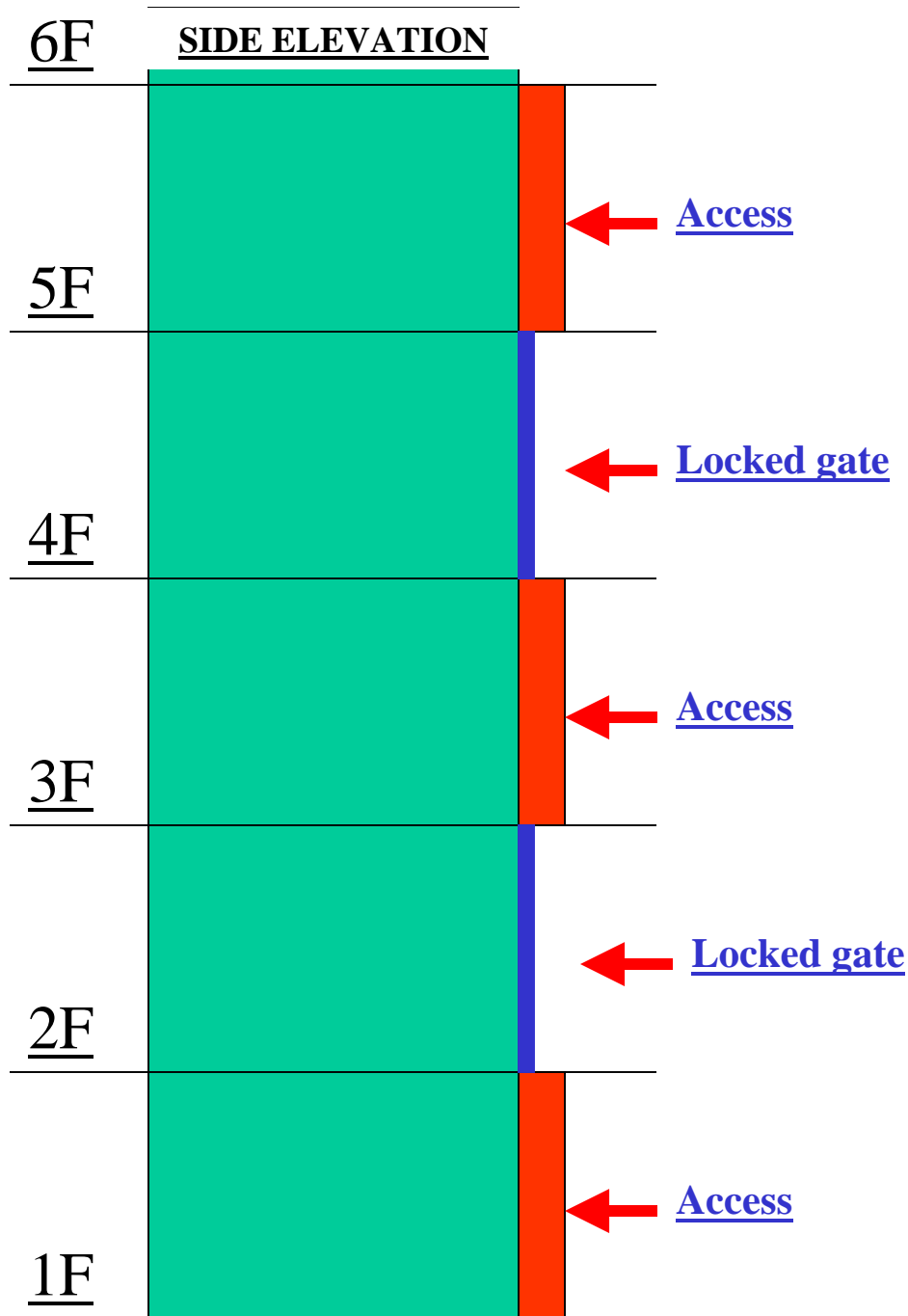




The shaft is now protected from anything falling into it, from all floors.

You must also protect those workers that need to be inside. You are required to provide safe access to a safe working platform. This can be achieved with either fixed scaffold, or a mechanical platform.

IMPORTANT NOTE: The top of the shaft (if not covered) must have a minimum of a durable net to ensure that nothing can fall on workers inside.



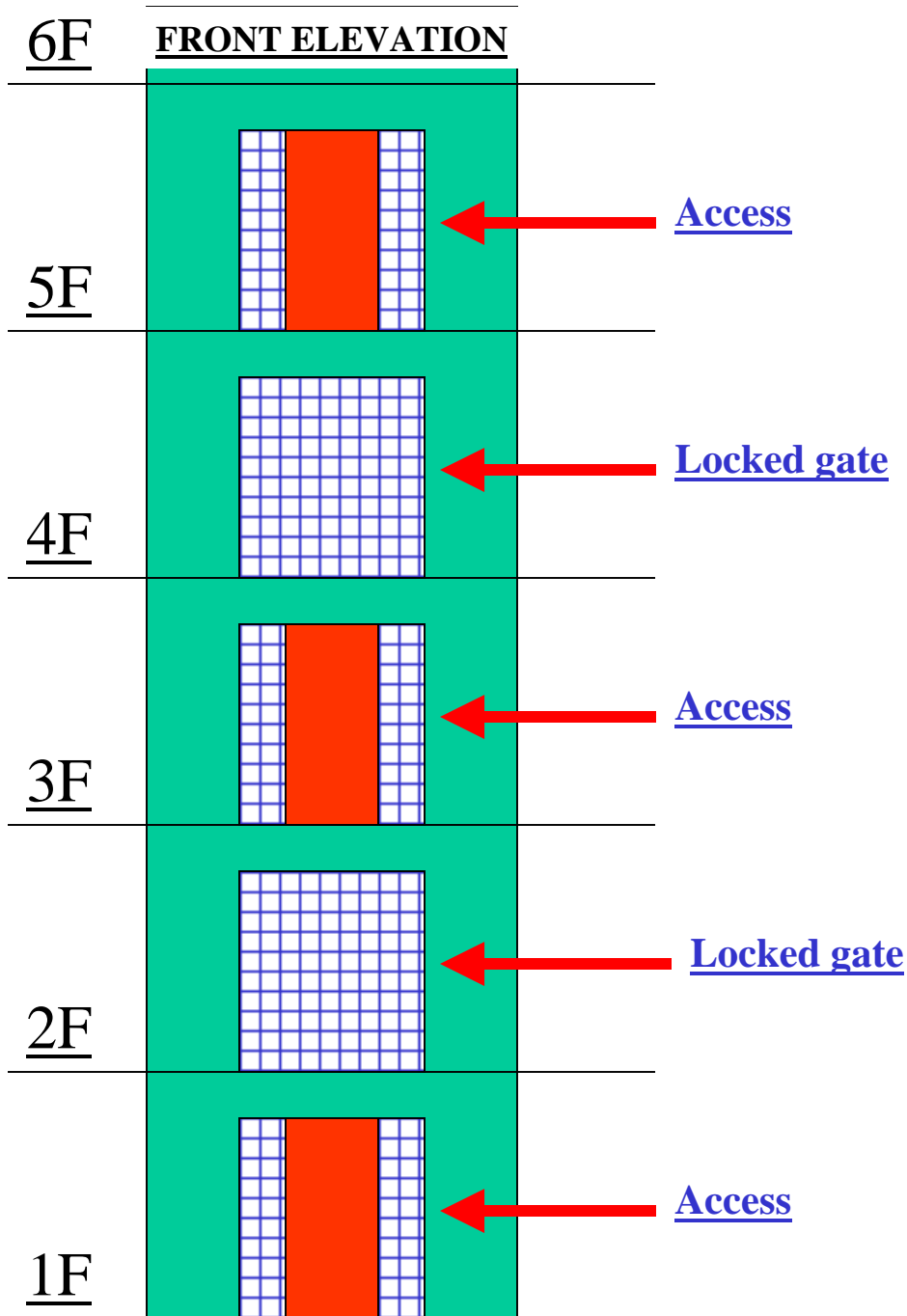
Where scaffold is used inside a shaft it must:

Have proper access at every second floor

access must not detract from standard of protection that is to be achieved at each level

Design scaffold in order that a stretcher rescue can be performed if needed.

Maximum gap between deck edge and shaft face 150mm
if this cannot be achieved a mid and handrail must be installed



ACCESS

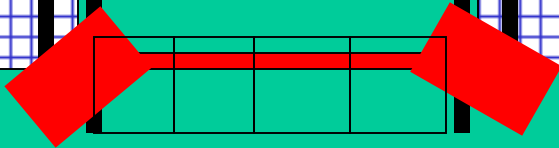
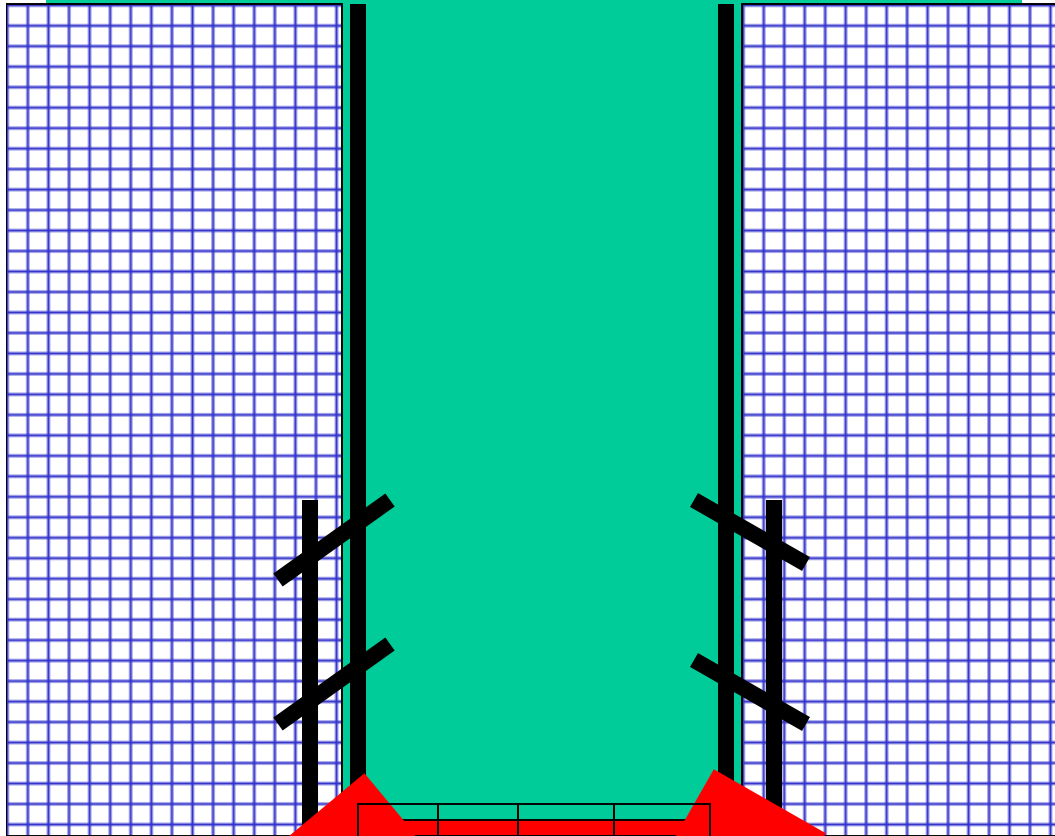
Positioned in middle of shaft entry

Full height fence type protection
firmly secured (tamper proof)

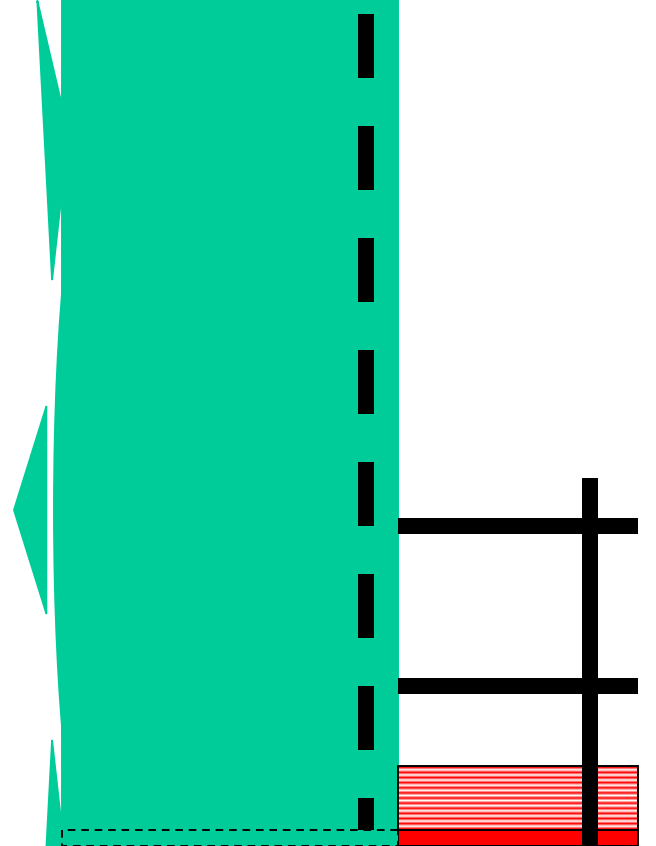
Secured planks to lap both floor slab
and scaffold by at least 500mm

NOTE: Deck at access levels to be
level with slab.

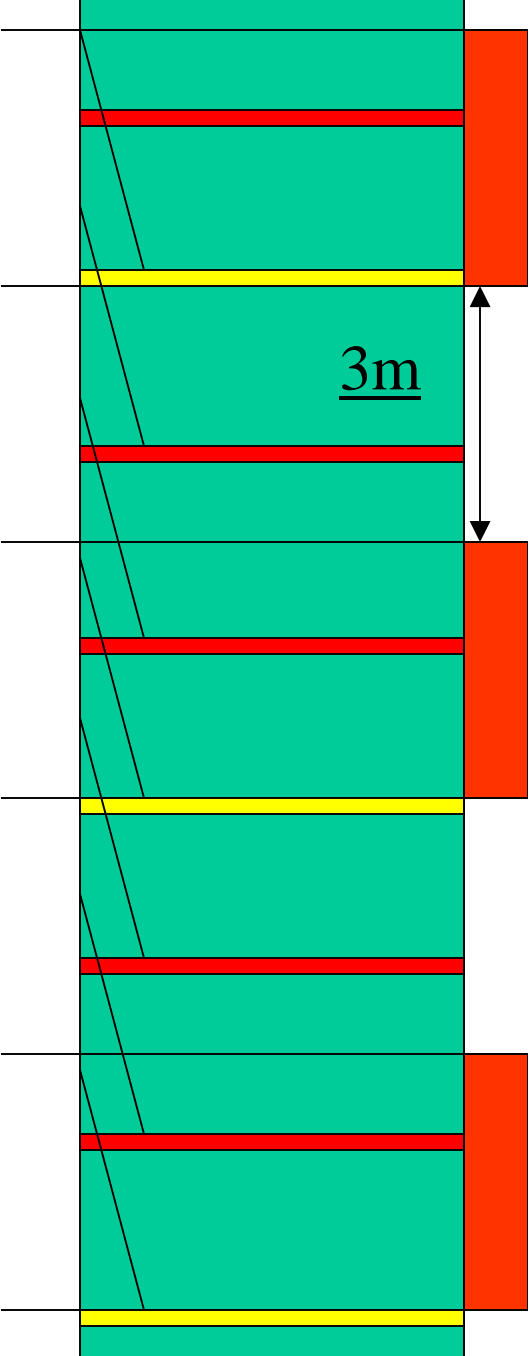
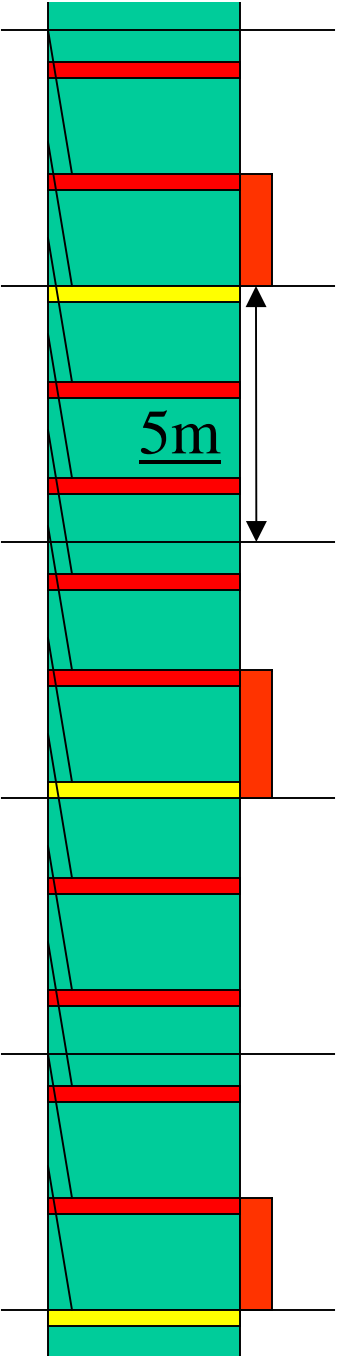
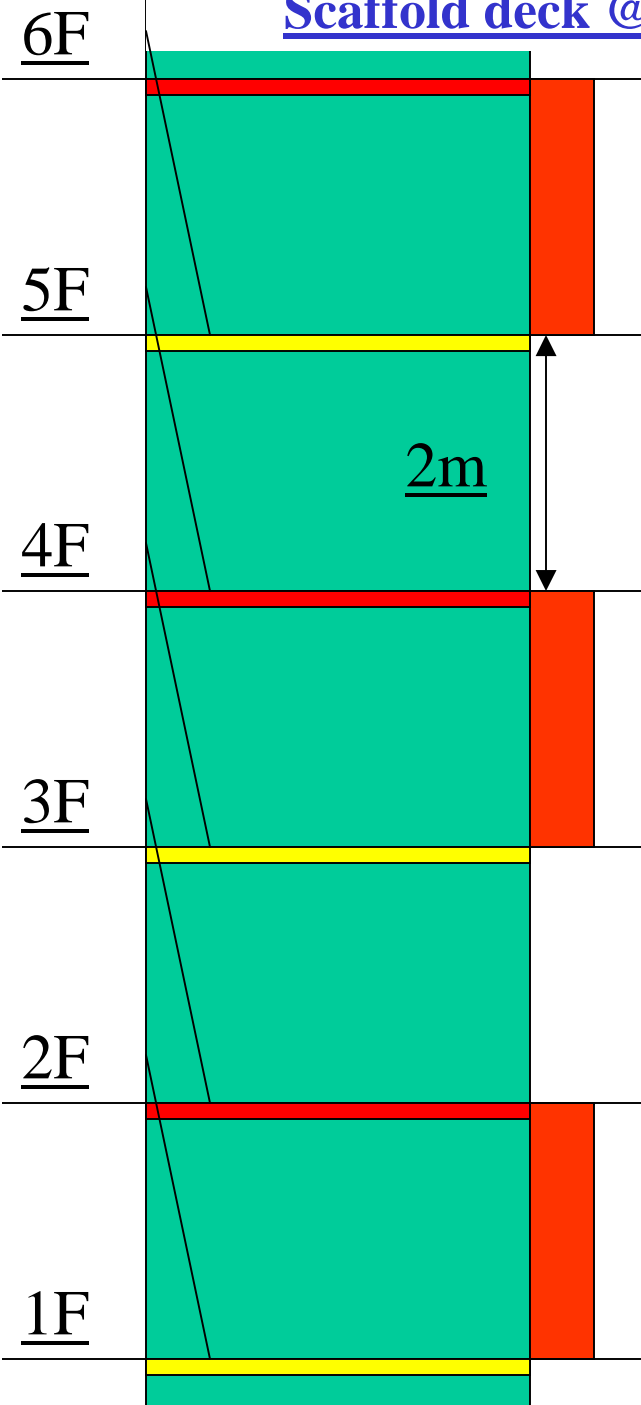
FRONT



SIDE



Scaffold deck @ ACCESS levels MUST always be level with slab



WHEN DESIGNING SCAFFOLD FOR LIFT SHAFTS

YOU MUST TAKE INTO ACCOUNT A POSSIBLE FUTURE
STRETCHER RESCUE.

DESIGN IN (AT BASE LEVEL) A “2.0m x 1.0m” BAY

PLEASE NOTE: THIS BAY IS TO BE FULLY DECKED
“but” IN THE EVENT THAT IT IS REQUIRED FOR
RESCUE “the planks can easily be removed”

وبلاگ نظارت و ایمنی کارگاه
